

# Port of Antwerp-Bruges



# A global port in the heart of Europe



**One port**  
Two sites





**Total throughput**  
287 mio ton/year



**GDP** 4.5%



Largest **car handling**  
port in Europe  
3,5 mio cars/year



Largest **chemical**  
hub in Europe



15% of EU **gas** market



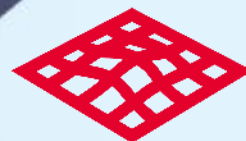
Important **cruise**  
port in Benelux  
+300,000 passengers



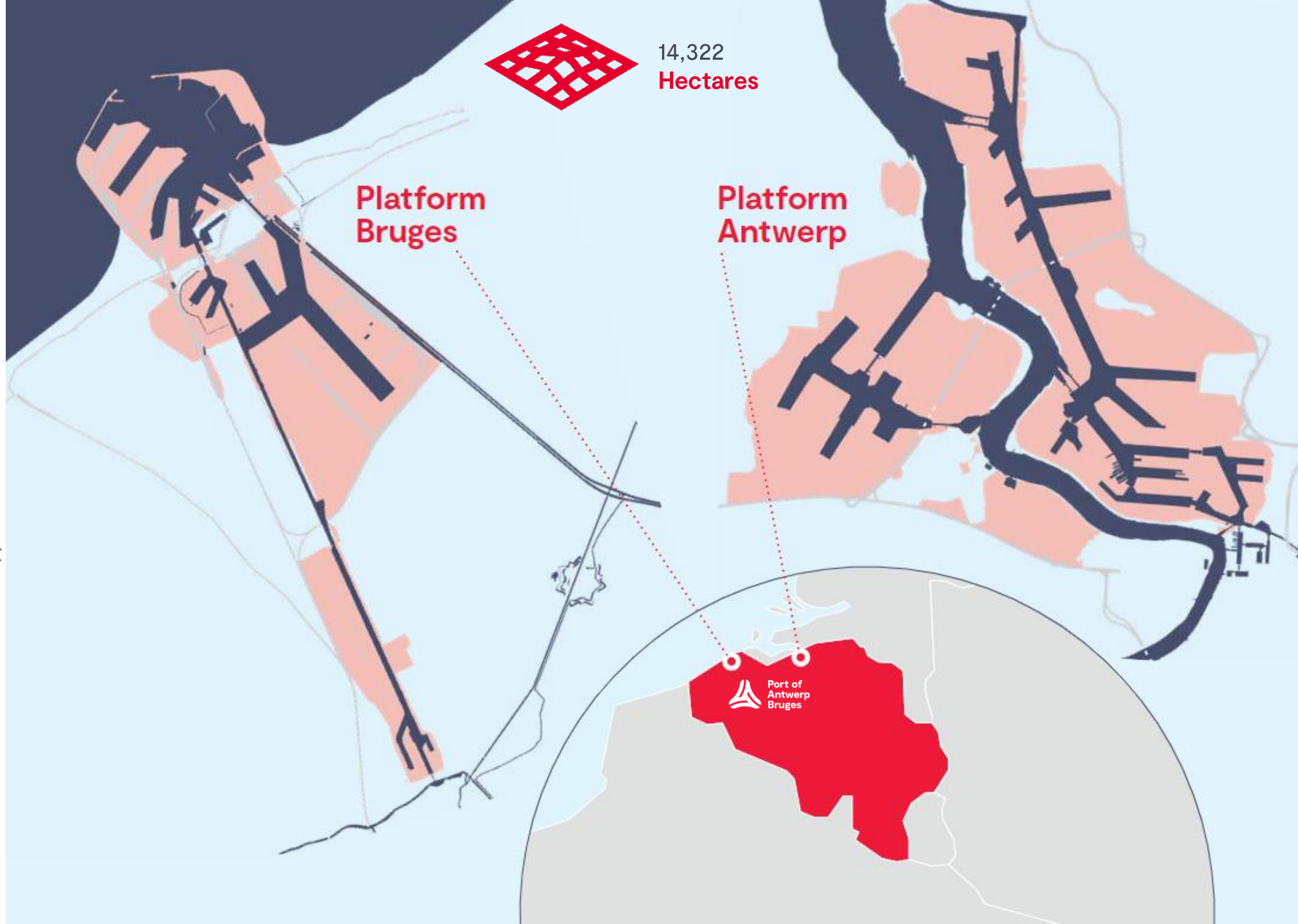
164,000 **jobs**  
Direct and indirect



1,400  
**Companies**



14,322  
**Hectares**



# Daily operations



*Frontrunner in four roles*

Port Authority as a driver  
for Port of Antwerp-Bruges



Regulator



Operator



Landlord



Community builder



# VUCA world and its disruptions

Brexit

Covid-19

US – China – EU trade wars

Russia – Ukraine conflict

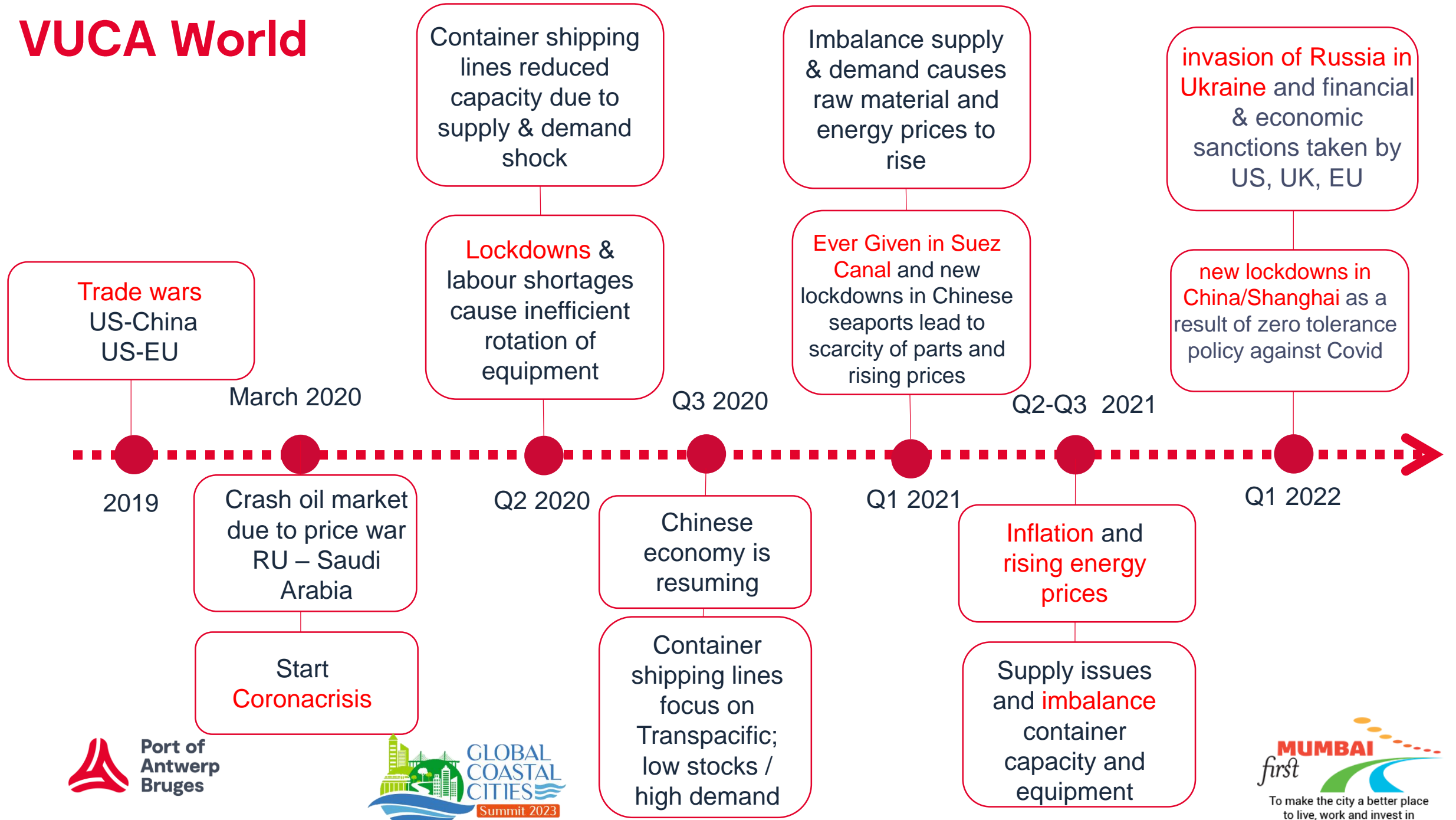
What's next?



Port of  
Antwerp  
Bruges



# VUCA World



# How Port of Antwerp-Bruges is dealing with disruptions



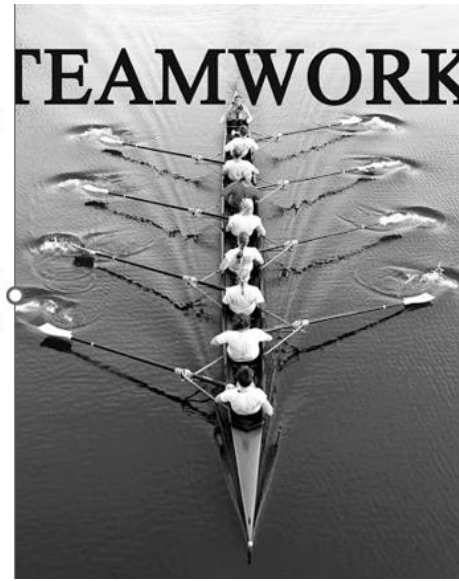
Port of  
Antwerp  
Bruges



## Port of Antwerp Covid-19 Taskforce

Maximum communication and cooperation  
=> POA 100% operational

- Daily Crisis Management Team (CMT)
- Multi-disciplinary and cross-border taskforce with all main stakeholders related to the port
- Monitor day-to-day operations
- Pro-active, rapid, aligned and transparent communication



## Border inspection posts: one stop shop



Federal Agency for the Safety of the Food Chain (FA SFC)

Administrative building:  
• Customs  
• FA SFC  
• Federal Agency for Nuclear Control



## Faster adaptation of digital technologies

- Speed up the digitalisation
- more transparency in the supply chain
- POAB supports and develops NxtPort/RX Seaport



## Virtual & teleworking environment

- Keep the effectiveness gain

## European hinterland : accessibility of Port of Antwerp Green lanes for freight transport



"Fast" lanes



Operational, including China trains



Operational



Operational





# AMERICA



*Volatility...  
Uncertainty...  
Complexity...  
ambiguity...*

## Our core words



**Port of  
Antwerp  
Bruges**



**GLOBAL  
COASTAL  
CITIES**  
Summit 2023

**MUMBAI**



To make the city a better place  
to live, work and invest in

# Knowledge sharing the DNA of Port of Antwerp – Bruges





# References



## Oman

**Port of Duqm: set-up of a greenfield port**

**Port of Antwerp International is a shareholder in Port of Duqm.**

**Manage: Various positions in the Executive Committee to ensure an active role in the management of the port.**

**Consult: port regulations, land lease policy, marketing plan development, port optimization policy, legislative framework, blue collar training**

## Brazil

**Porto do Açu: setup of a greenfield port**

**Port of Antwerp International is a shareholder in Porto do Açu.**

**Manage: PAI holds 2 positions in the commercial department to ensure an active role in the management of the port.**

**Consult: business intelligence, master planning, port management organization, port regulations, concession and port dues policy, set-up of a corporate structure**



### India - Gujarat region - Hazira Port

**Expansion of the Port of Hazira - Gujarat region**

**Feasibility study, master plan revision, training and operations program revision, dredging strategy development, traffic study**

### India - Haldia

**Haldia Dock Complex**

**Review on technical feasibility report to increase the capacity of Haldia dock.**

### India - Kolkata

**Kolkata: Inland waterway terminals - technical consultancy**

**Due diligence investigation, market analysis and transaction study for the implementation of a PPP project for an inland terminal**

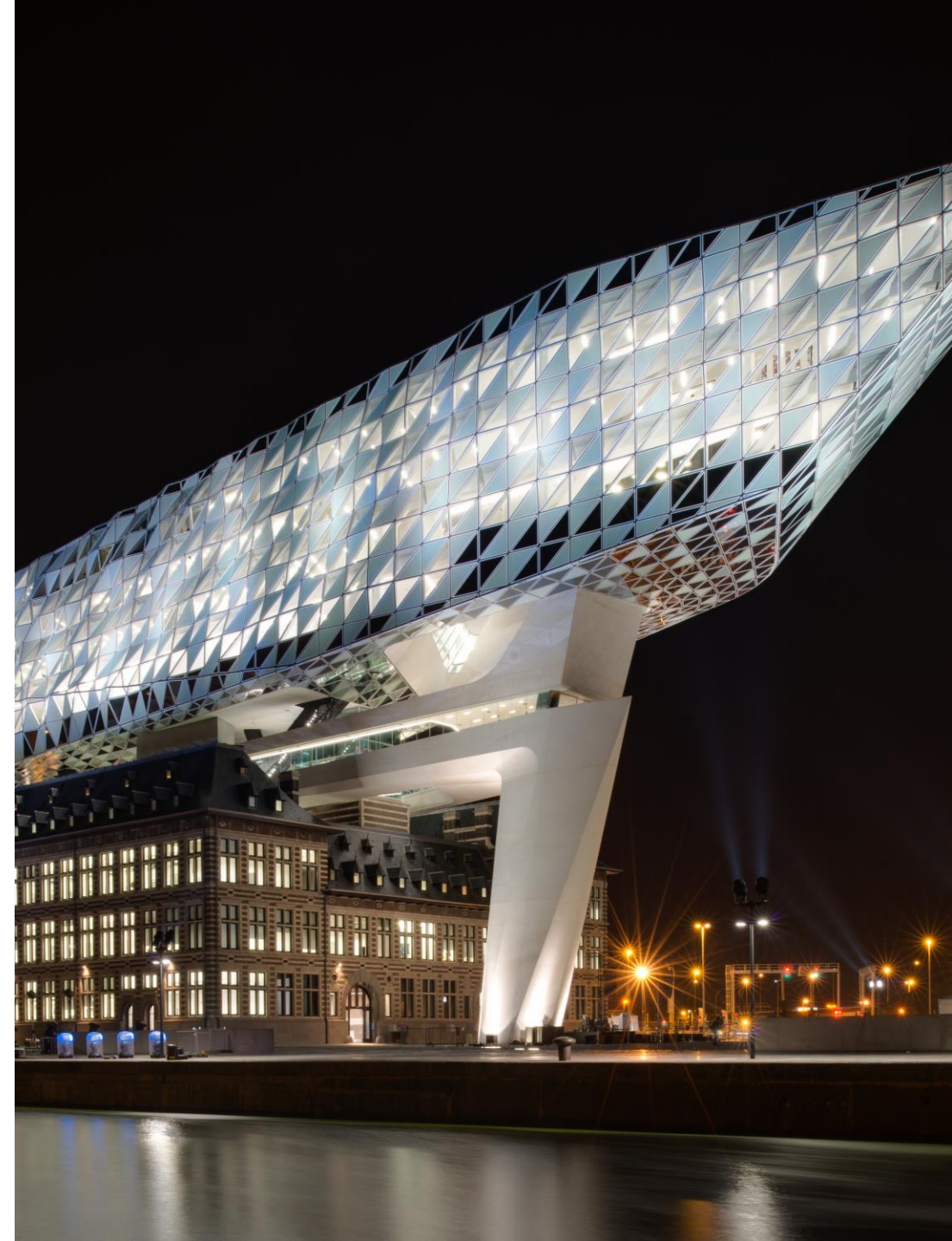


# Training

## Antwerp training center

- International port training center
- Port & terminal related training (in Belgium & abroad)
- Since 1977
- 16.000 alumni | 150 countries
- 1982: first participant from China
- 2004: APEC recognized by SAFEA
- Training institutes in India & China

## International Training centers



# Tailor made Courses and Staff Exchanges

## Tailor made training courses:

- Tailor-made training courses to the specific needs of the customer or projects in which PoABI is committed.

## Staff Exchanges:

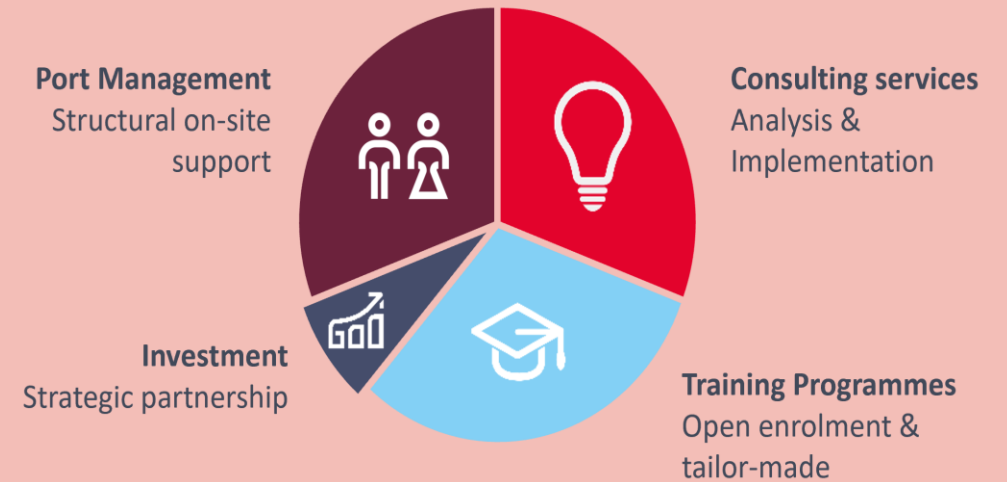
Long-term induction training specifically for staff of projects in which PoABI operates:

- Commercial and Financial Management for Duqm and Açu staff.
- Long-term practical training in:
- HSSEQ (Locally and in collaboration with OCHA).
- Training Tugboat Pilots and Pilots (Brabo).

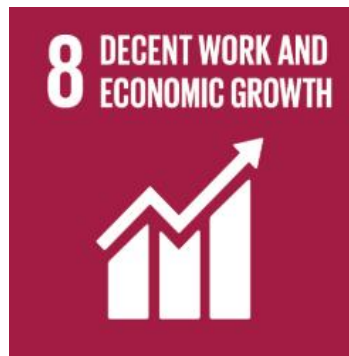


## Together towards sustainable port development

In an integrated partnership



# In line with the Sustainable Development Goals



# Frontrunner energy transition

## Projects in energy, industry and shipping



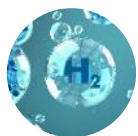
### Sustainable Energy



**Expand Onshore wind** production capacity Hyoffwind



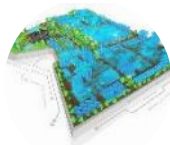
**Backbones for sustainable flows** (H<sub>2</sub>, CO<sub>2</sub>, waste heat & steam)



**Hydrogen Import Coalition / Pilots**



### Sustainable Industry



**NextGen District** – hotspot for circular Economy



**Antwerp@C – CCS**



**Power-to-Methanol**  
green methanol production (CCU)



### Sustainable Shipping



**Multi Fuel Port** – alternative fuels on offer



**Onshore power supply** for vessels



**Tugboats on H<sub>2</sub> & methanol**



# In tune with the world

